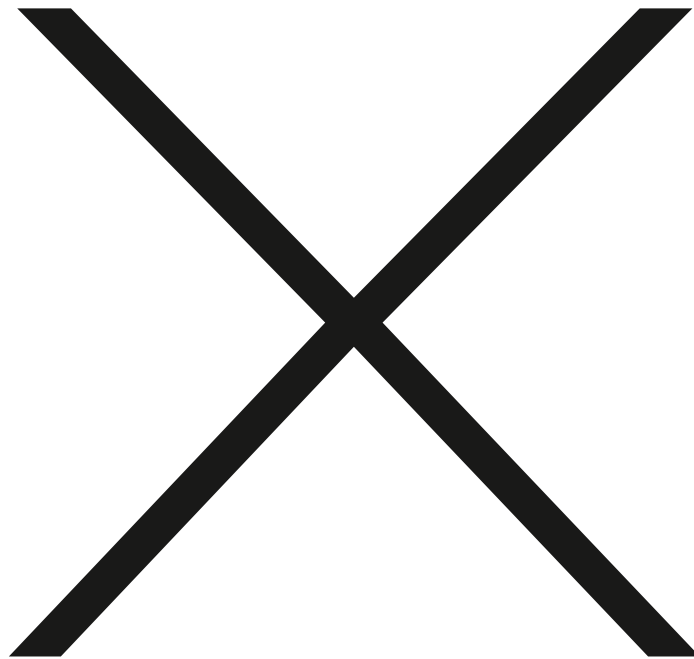


art
et
al.



ARTS
PROJECT
AUSTRALIA

INTERSECT



This is an Easy Read resource about
the 2022 Intersect exhibition

What is Art et al.?



Art et al. is an international website working with artists and art professionals who do and don't identify as having a disability

**art
et
al.**

Art et al. means art and others.



Art et al. provides opportunities for artists from supported studios to connect with the art community.



Art et al. includes people from different countries.

Supported studios



A supported studio is a place for artists with different health or social needs.



Supported studios help artists learn new skills or build their careers as artists.

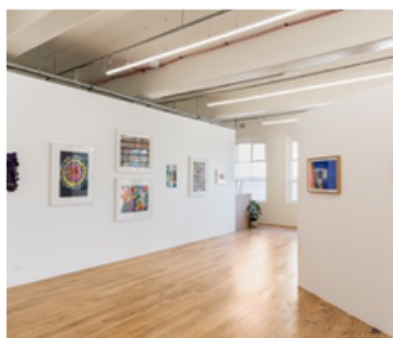


The supported studios included in this exhibition include Arts Project Australia, Art Gusto, Ketemu and Submit to Love.

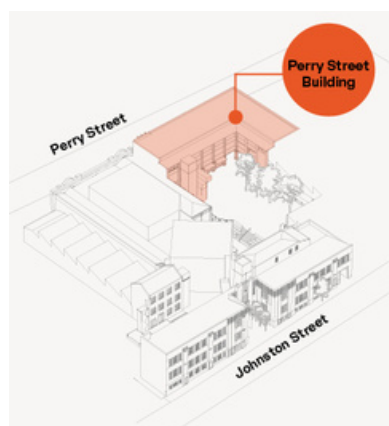
Exhibition information



Intersect is Art et al.'s second Australian exhibition at Art Project Australia's Collingwood Yards gallery.



Intersect will be open
3 – 25 September 2022

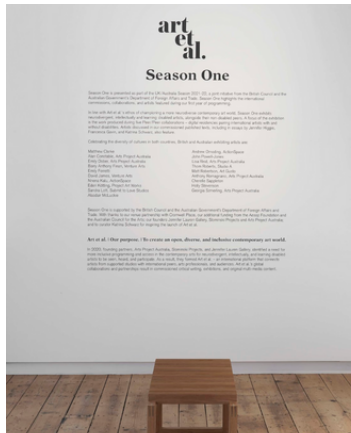


The gallery is located on Level 1 of the Perry Street building at Collingwood Yards.



Intersect will include work from all over the world by intellectually disabled artists and their non-disabled peers.

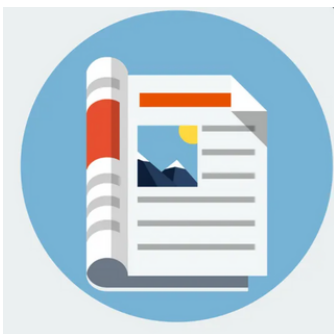
Exhibition information



Intersect will focus on artworks and collaborations and writing made as part of 'United Kingdom and Australia Season of Culture' during 2021-2022.



Intersect will also show projects between Billy Mann and the Monash University Museum of Art, as well as Eden Menta and Stella Sideli



Articles written by Jennifer Higgie, Ella Fleck and Katrina Schwarz will be available to read at the exhibition.



Intersect will also include a selection of video works showing a collaboration between Art et al. and Indonesian studio Ketemu.

Featured artists



Alan Constable is an artist known for his ceramic cameras.

Alan has been attending Arts Project Australia since 1991.



Anthony Romagnano is an Arts Project Australia artist.

Anthony uses popular culture and still life images as references for his work. He carefully looks at an image before drawing the outline, then adds blocks of colour.



Bronwyn Hack is a painter, printmaker, ceramicist and textile artist working from the Arts Project Australia studio.

Bronwyn's work focuses on animals, dogs and the human body. Many of her works tell a story.

Featured artists



David Blandy is an artist living and working in the United Kingdom. His art includes installations, performance, writing, gaming and sound art.

Collaboration is important to David's art because he explores shared histories.



Emily Dober is a painter and illustrator who focuses on the female body.

Emily has worked at Arts Project Australia since 2010.



Lisa Reid is an Arts Project artist working in ceramics, painting, drawing, printmaking and digital media.

Lisa makes detailed artworks. She takes inspiration from life, family photographs and popular culture.

Featured artists



Larry Achiampong is a British artist from Ghana. He creates films, imagery, live performances, objects and sound.

Larry's art explores ideas about class, gender and culture.



Matthew Clarke is an Australian artist based in Warrnambool.

Matthew paints brightly coloured portraits using lots of line-work. He takes inspiration from his location and the people around him.



Sam Jevon calls herself the "Queen of Wonky". She draws mostly black and white images of people.

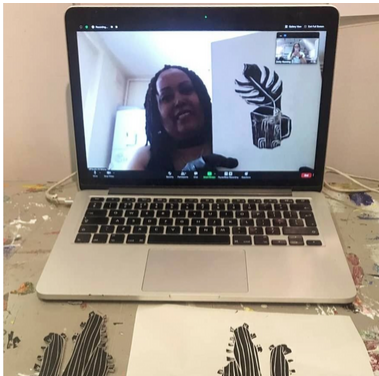
Sam uses lines in her artwork to create pattern and texture.

The artwork pictured is titled *Girl with Flower*, which Sam drew in 2022.

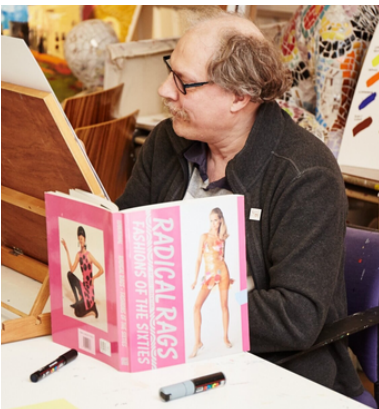
Featured artists



Samraing Chea is an Arts Project Australia artist. He uses grey lead and colour pencil on paper to create funny images with text.



Sandra St Hilare is a UK based artist working from the Submit to Love studio.



Tony Allen is a UK based artist working from the Submit to Love studio. His artwork is highly detailed, with dense patterns and colour.



Yoki Mekuria is a UK based artist working from the Submit to Love studio.

Yoki creates detailed portraits using embroidery.

Peer to peer



Peer to Peer commissions new artwork from two artists working together internationally.



One artist will be working out of a supported studio – a creative environment for artists with health or social needs.



The artworks from the collaborations may be any size, art material and will all be very different.

Peer/Peer artists



Georgia Szmerling's art includes ceramics, paintings and drawings, which she makes at the Arts Project Australia studio.

The natural world is a key theme in Georgia's work. Her plants and landscapes are made with her use of lines and texture.



Holly Stevenson is a London artist who makes ceramic works.

Her work explores feminism and equal rights and opportunities.

Peer/peer artists



John Powell-Jones is an artist working in the United Kingdom.

His art deals with themes of perception, power and personal reality. John creates prints, performance, video, ceramics and sound.



Matt Robertson is an artist working from the Art Gusto studio in Geelong.

His artworks form stories which are quirky and he delights audiences with his use of colour.

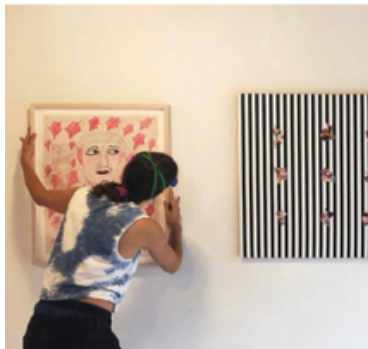
Curatorial Mentorship



A Curatorial Mentorship is a creative digital project. At the moment is all happens online.

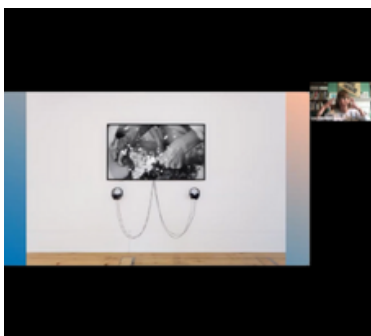


It pairs an artist from a supported studio with a professional curator from somewhere in the world.



A curator is someone who selects artworks to show in exhibitions.

They also write the labels that go next to the artworks, and do other things like writing about the artists for publishing in books.



The curator talks to the supported studio artist about how to make an exhibition. It might be in a gallery or museum, or online.

Curatorial Mentorship



Eden Menta is an artist who works across mediums including photography, collage, drawing and painting. Their work includes pop culture, self-portraits and insects.

Eden has worked in the Arts Project Australia studio since 2013.



Stella Sideli is a curator and researcher based in the United Kingdom. She is interested in artwork that combines image, sound and movement.

Stella studies feminism, gender and sexuality that are different to normal.

Curatorial Mentorship



Lala Nurlala is an artist from Indonesia. She uses different materials and digital media to make art.

Lala is inspired by popular and traditional culture.



Matt Burrows is a curator based in the a gallery called Exeter Phoenix.

Matt organises many different art shows at the gallery.

Curatorial Mentorship



Billy Mann has been at Submit to Love Studios, London for nine years, after a brain injury that cut short his career as a magazine journalist.



The Monash University Collection is managed by the Monash University Museum of Art (MUMA).

The Collection includes a wide range of artworks including painting, sculpture, photography, video and installation.

For more information



Visit our website for more updates
www.artsproject.org.au



Email: **gallery@artsproject.org.au**



Call: **0477 211 699**