

ARTS  
PROJECT  
AUSTRALIA



**Japan and Mash**  
**Rebecca Scibilia Solo**

—  
Mapping Our Own Future  
2020 Online Exhibitions



Arts Project Australia  
is proud to present

---

## Japan and Mash Rebecca Scibilia Solo

Online now as part of our  
2020 exhibition series  
*Mapping Our Own Future*

Launched 4 June 2020  
[www.artsproject.org.au](http://www.artsproject.org.au)

---

All artworks are for sale.  
Prices quoted are unframed  
& don't include shipping fees.

Artworks can either be mailed  
or stored safely until we return.  
In-person collection is available  
on Thursdays until government  
restrictions are lifted.

- 60% of sales go to the artists
- 40% of sales go to APA to support our studio and artists

Rebecca Scibilia (b 1980) is a Melbourne-based artist who utilises a variety of media for her works, sourcing her imagery from a range of popular culture items. In her solo, Scibilia weaves depictions of journeys in Japan, characterised by bold texta colour and assured pattern making which maintains an evocative balance of vibrating energy and personal reflection. Scibilia has been a regular studio artist at Arts Project Australia since 1999 and had her first solo exhibition in Melbourne in 2014 and a second solo in Sydney in 2019. She has exhibited in numerous group shows including *Hybrid Making*, Project Ability Gallery, Glasgow; *Heavenly Stems*, Neon Parc, Melbourne; and *Melbourne Art Fair*, Melbourne. Her work is held in the Leeuwin Estate Collection in Western Australia and private collections Australiawide.

---

This exhibition coincides with the group exhibition  
*Neither here nor there*.



*Tokyo Japan Disneyland Trip 2019*

marker on paper

28 x 38 cm

RS19-0019

**\$200**



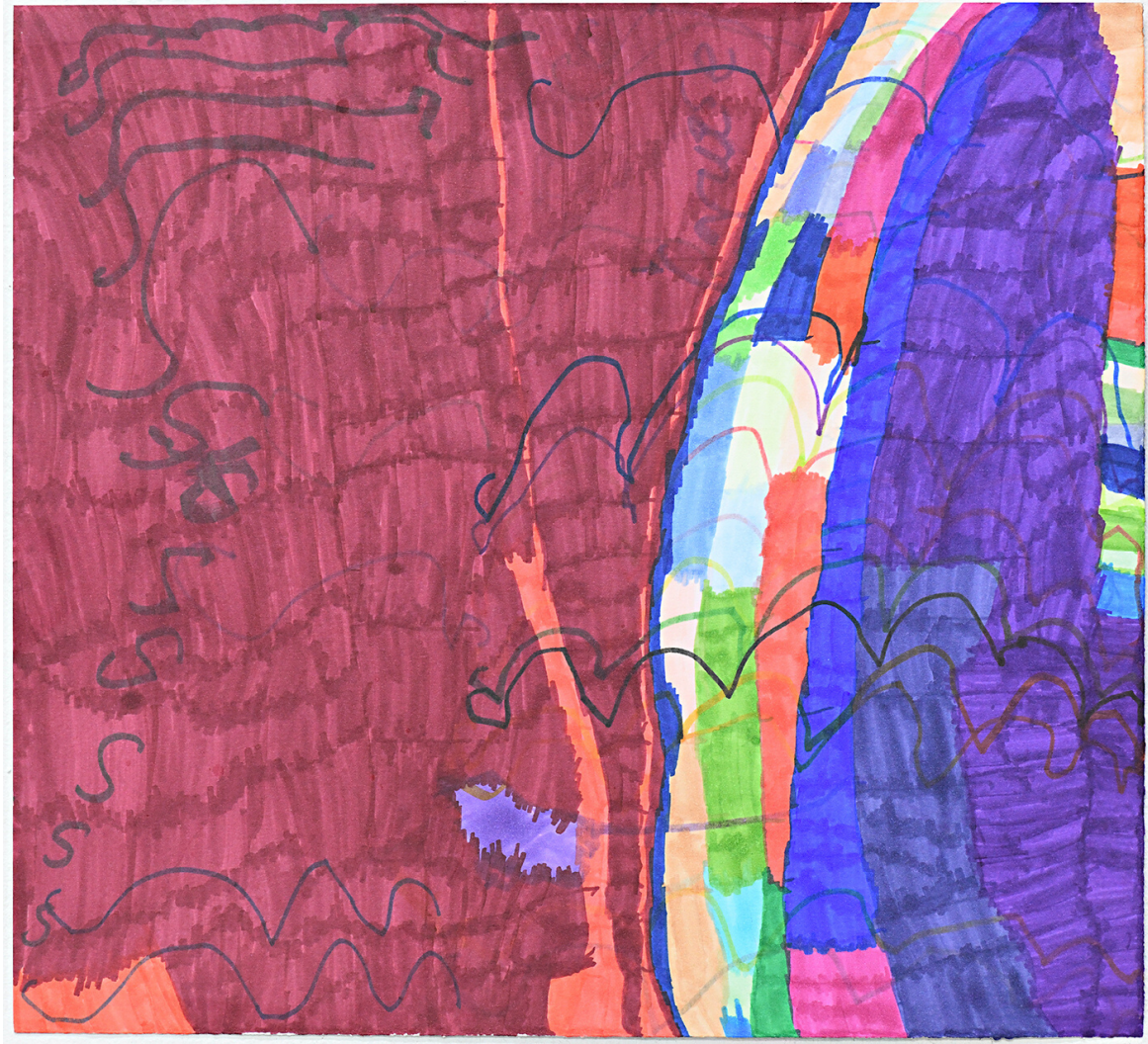
*Tokyo Japan Disney 2019*

marker on paper

35 x 50 cm

RS19-0020

**\$280**



*Tokyo Cruise* 2019

marker on paper

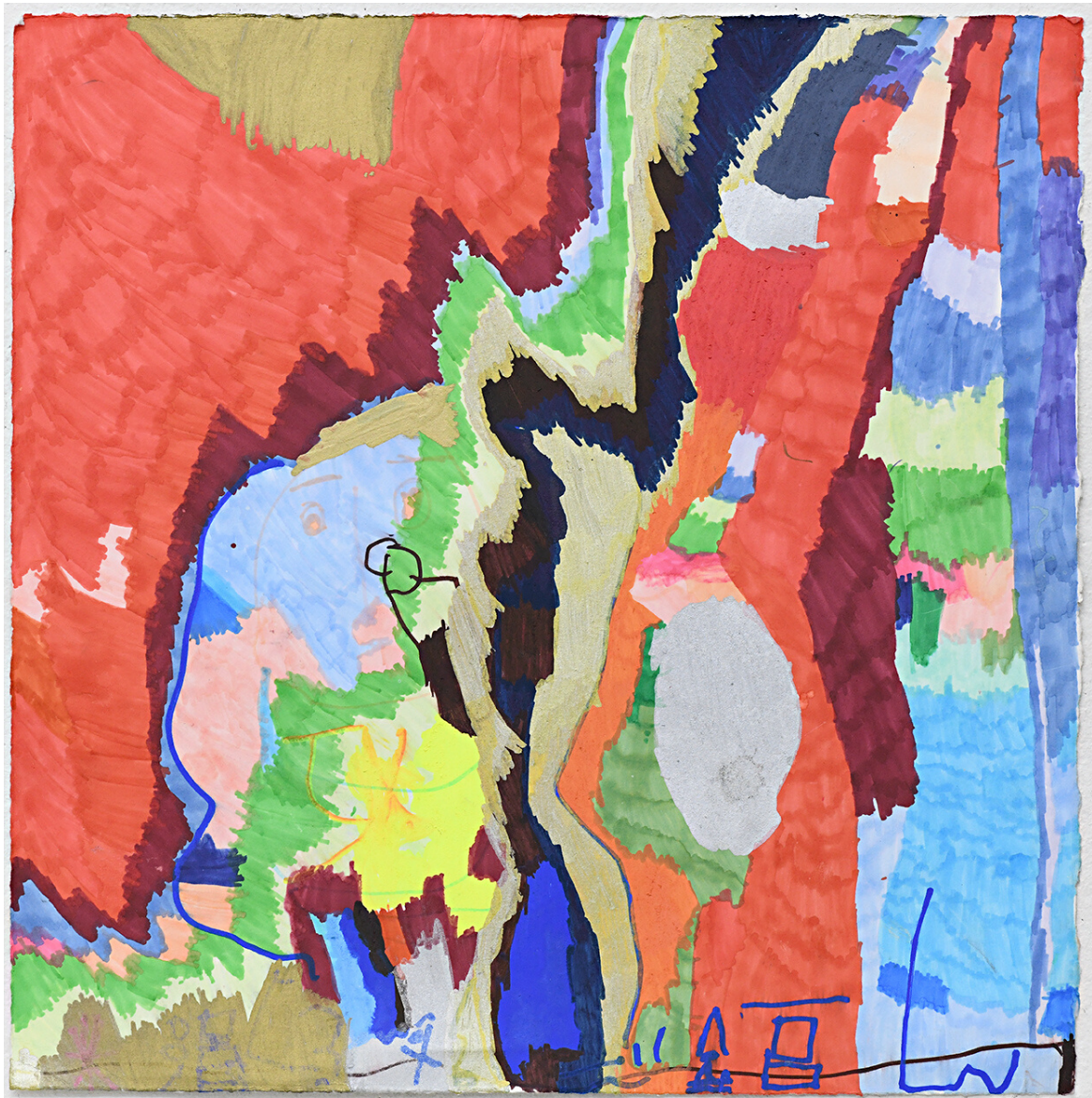
38 x 35 cm

RS19-0017

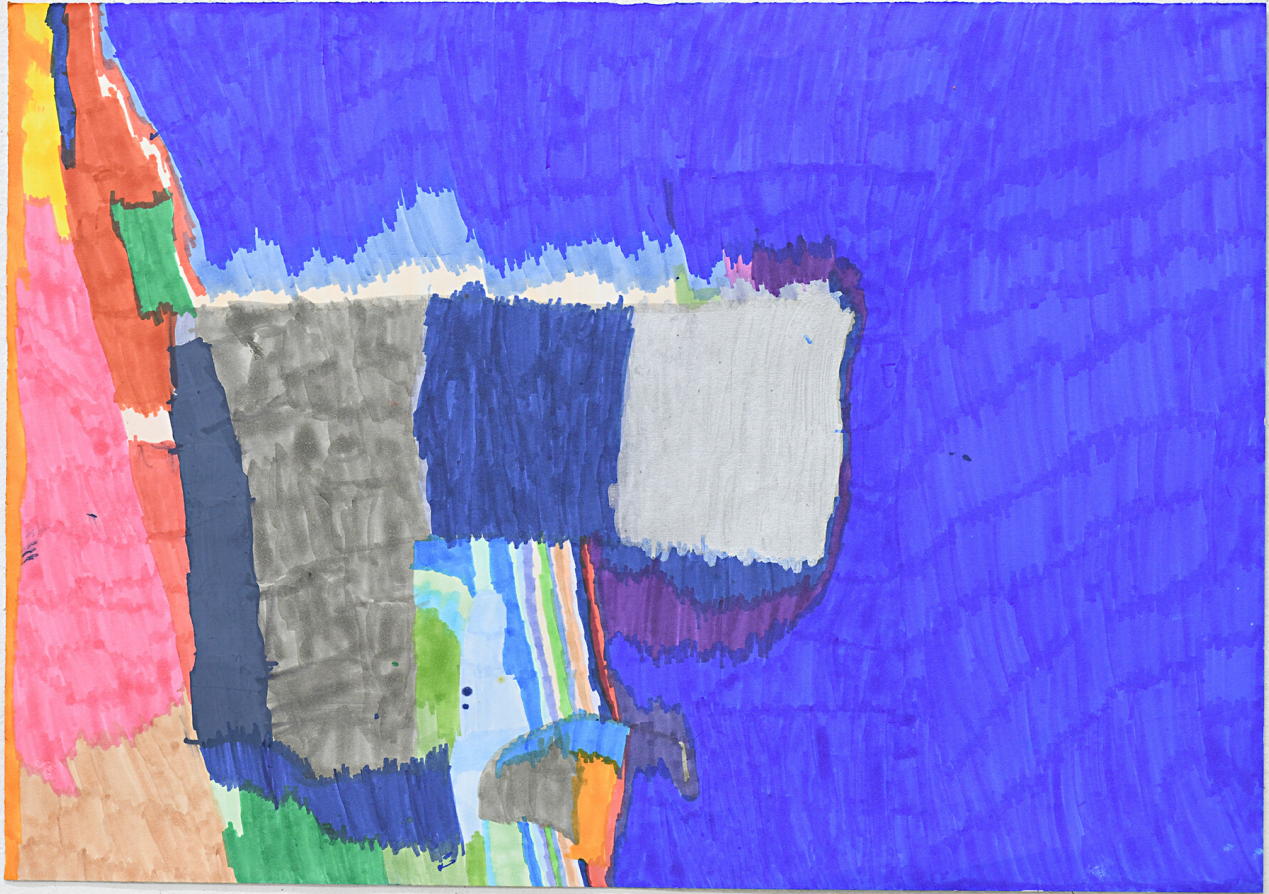
**\$280**



*Japan Trip 2019*  
marker on paper  
28 x 38 cm  
RS19-0018  
**\$200**



*Untitled* 2019  
marker & paint pen on paper  
38 x 38 cm  
RS19-0016  
**\$280**



*Tokyo Japan Disneyland Trip 2019*

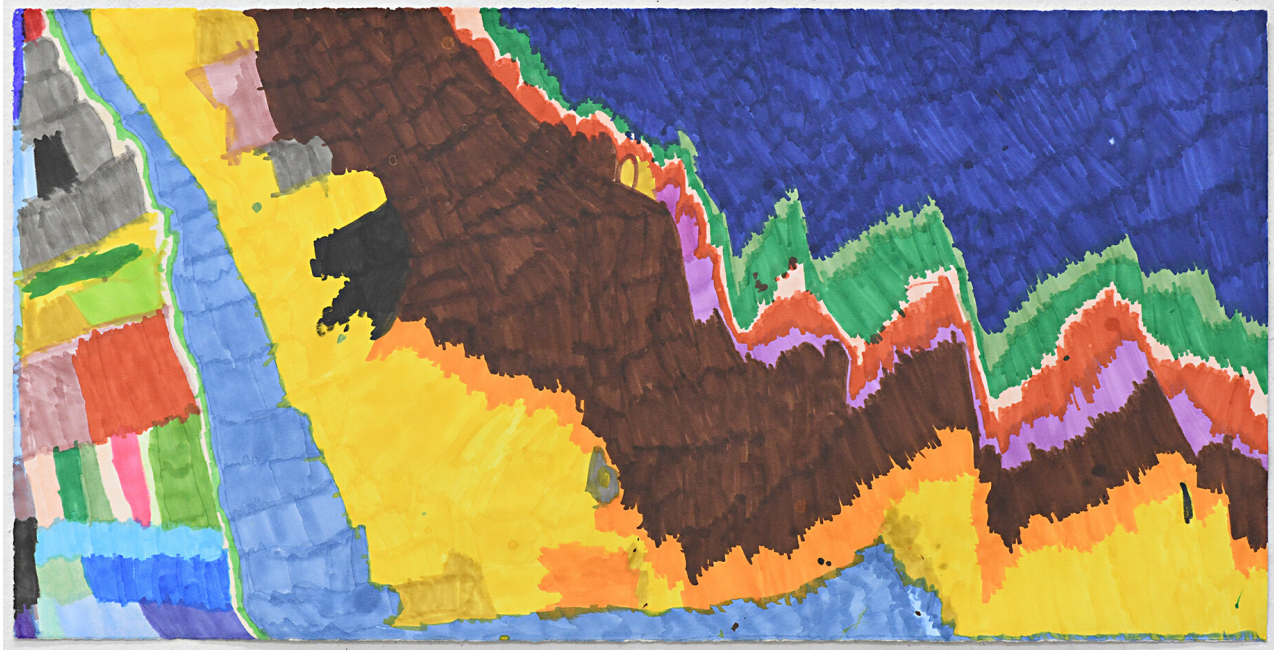
marker & paint pen on paper

35 x 50 cm

RS19-0015

**\$280**





*Tokyo Japan Disneyland Trip 2019*

marker on paper

28 x 56 cm

RS19-0013

**\$380**



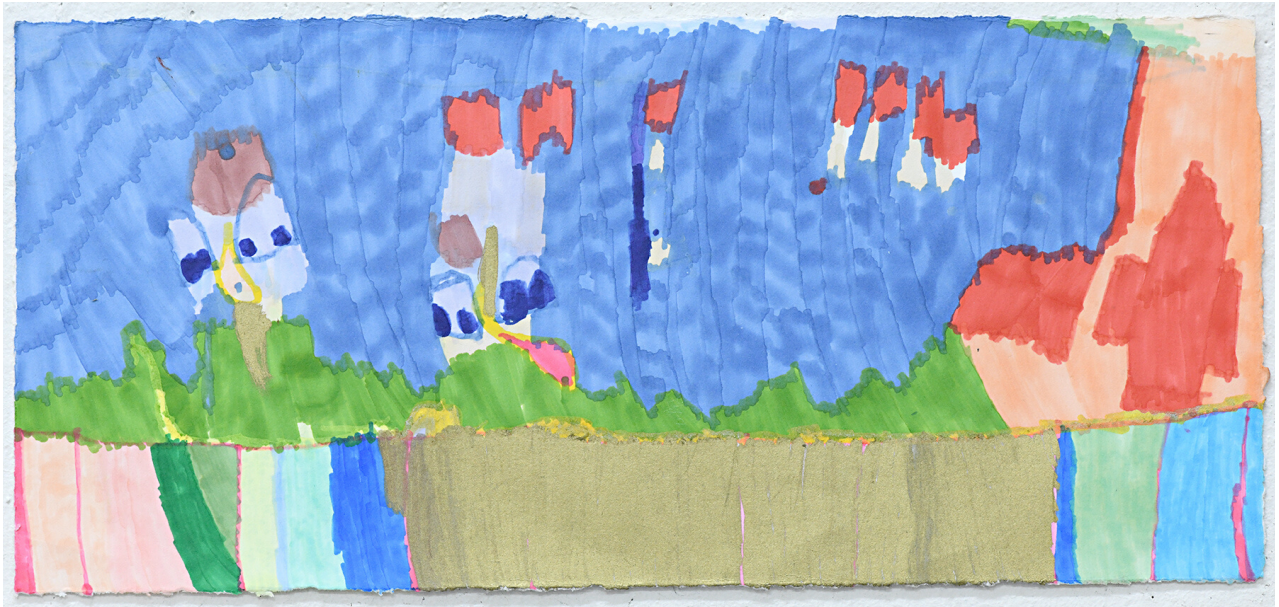
*Tokyo Japan Disneyland Trip 2019*

marker & paint pen on paper

35 x 25 cm

RHC19-0012

**\$200**



*Tokyo Disneyland Parade 2018 Last Year 2019*

marker & paint pen on paper

17 x 38 cm

RS19-0011

**\$200**



*Gold Mickey Mouse 2018 2019*

marker & paint pen on paper

19 x 28 cm

RS19-0010

**\$150**



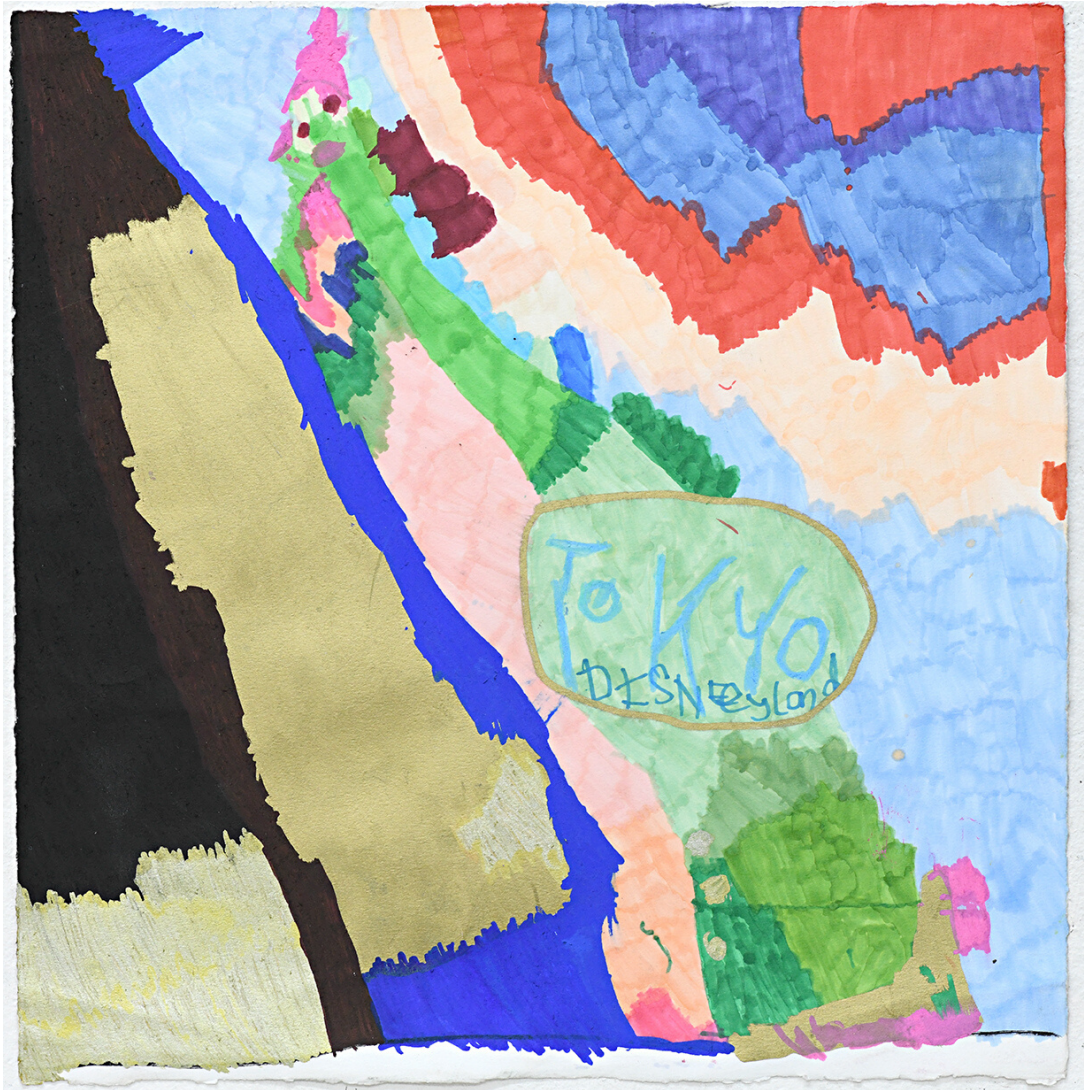
*Japan at Night* 2019

marker & paint pen on paper

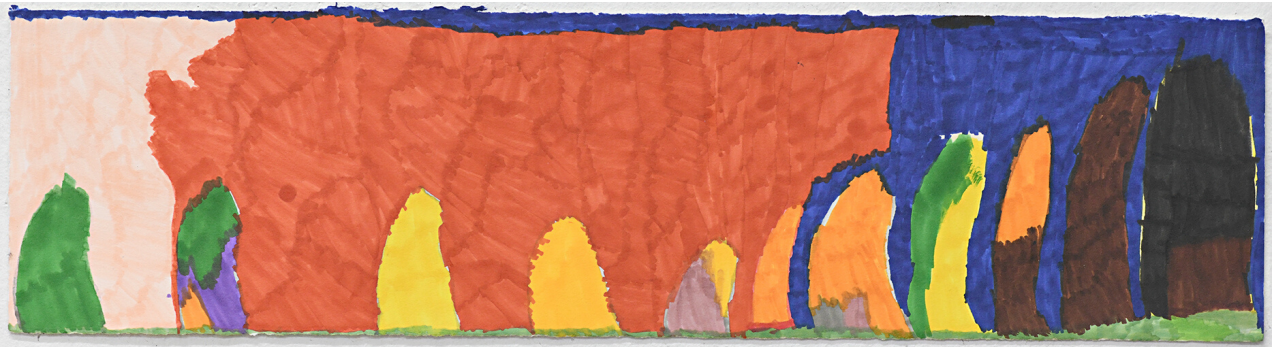
33.5 x 34.5 cm

RS19-0008

**\$200**



*Tokyo Disneyland 2019*  
marker & paint pen on paper  
38 x 37 cm  
RS19-0009  
**\$200**



*It's the Nighttime and it's the Buildings of Japan 2019*

marker on paper

14.5 x 56 cm

RS19-0014

**\$380**



*Tokyo Japan Disneyland Trip 2019*

marker on paper

19 x 28 cm

RS19-0007

**\$150**





*Mash* 2019  
acrylic on canvas  
97 x 182 cm  
RSCV17-0003  
**\$1,400**



## Thank you for your support!



For enquiries, please contact  
Arts Project Australia

[sim.luttin@artsproject.org.au](mailto:sim.luttin@artsproject.org.au)

0437 448 758

[www.artsproject.org.au](http://www.artsproject.org.au)



---

PROUDLY SUPPORTED BY

LEONARD JOEL  
Est 1919

art.  
guide  
AUSTRALIA

Limb  
Family  
Foundation

 THE CALVERT-JONES  
FOUNDATION